

IN A MELLOW TONE

DUKE ELLINGTON

(TOMMY FLANAGAN)

(TRADITIONAL)

F#-9

B7

E7

A7^{ALT}

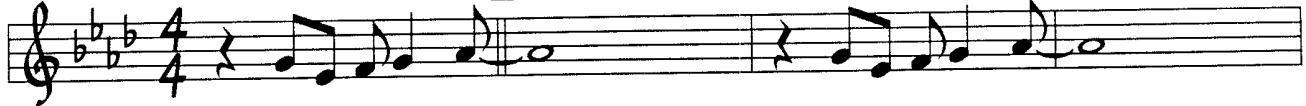
D7^{ALT}

G7^{b9}

(A) Bb7

Eb7

AbΔ

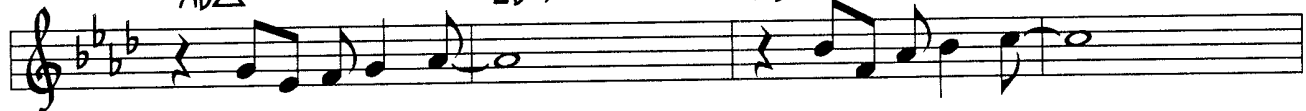


C7^{ALT} F7^{ALT}
AbΔ

Bb-7
Eb-7

Eb7
Ab7

Eb-7
DbΔ



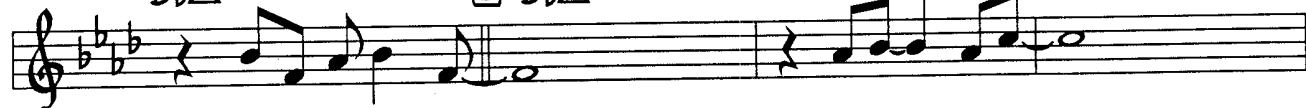
Ab7
DbΔ

(B) DbΔ

Db-7

Gb7

C7
AbΔ



F7^{ALT}
F7

Bb7

Eb7
Bb-7

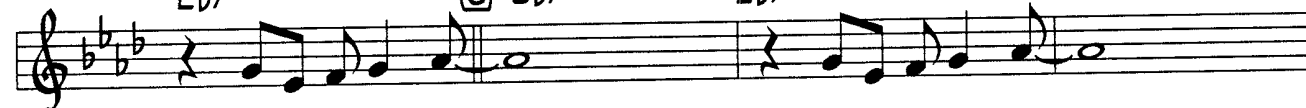


Eb7

(C) D7^{ALT}
Bb7

Db7^{#9}
Eb7

C7^{ALT}
AbΔ



B7
AbΔ

Bb-7
Eb-7

A7
Ab7

Eb-7
DbΔ

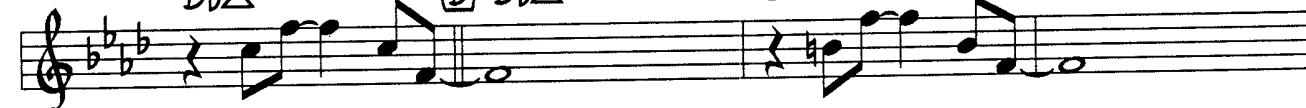


Ab7
DbΔ

(D) DbΔ

G7^{ALT}
Dø7

AbΔ



F7

Bb7

Eb7

D7^{#11} -----
AbΔ G7 Gb7 F7

